

NATIONAL OBSTETRIC INFORMATION SYSTEM (NOIS)

MALTA

ANNUAL REPORT 2005

*Department of Health Information
National Obstetric Information System (NOIS), Malta*

NOIS Registry team:

Principal Medical Officer (Contact person):

Dr. Miriam Gatt

Data management:

Ms. J. Farrugia

Ms. M. Mallia

NATIONAL OBSTETRIC INFORMATION SYSTEMS (NOIS)

A national obstetric information system was launched in the beginning of 1999 and now covers practically all deliveries taking place on the islands of Malta and Gozo.

Data collection and Sources of Information

Systematic data collection for NOIS commences once the mother delivers her baby. Information regarding the course and outcome of each pregnancy is recorded by the relevant staff at each centre on a standard NOIS sheet. Once the data are recorded, the sheets are forwarded to the DHI on a regular basis. At the DHI the relevant sheets are processed and entered into the NOIS database.

The maternity centres actively participating in this information system are: St. Lukes Hospital, Gozo General Hospital, St James Hospital Sliema and Zabbar and St. Philip's Hospital. Home deliveries which are not subsequently referred to a hospital are not captured by this system.

Report

This report analyses the national deliveries and infant/fetal births that occurred in 2005 and compares it to the figures reported for last year. The data in this report describes statistics for all deliveries and births registered into the system.

Data is sent to the Registry from all hospitals on the Maltese Islands. Accuracy and completeness of data sent on the NOIS reporting sheets is the responsibility of the Hospital providing data.

ANALYSIS

There were a total of 3804 deliveries registered in the Maltese Islands for 2005, which resulted in a total of 3865 infant/fetal births. The table below gives the number of deliveries and births in Malta and Gozo and registered in NOIS since 1999.

Year	Deliveries	Births
1999	4311	4382
2000	4311	4377
2001	3918	3955
2002	3873	3927
2003	3995	4054
2004	3838	3902
2005	3804	3865

Of the registered 3804 deliveries (3865 births), 3506 deliveries (3566 births) occurred in Malta and 298 deliveries (299 births) occurred in Gozo.

DELIVERIES

MATERNAL AGE, MARITAL STATUS, NATIONALITY AND PARITY

Maternal Age:

The maternities have been grouped into 5-year age groups and the frequency distribution of deliveries according to maternal age group is given. In 2005, the greatest number of deliveries 1410 (37%), occurred in the age group 25 to 29 years whilst the least number of deliveries 4 (<1%) occurred in the youngest age group <15 years. There were 6 deliveries in the oldest age group 45 years and over. The minimum age at delivery of the mothers was 14 years while the maximum age was 54 years. The most frequent age at delivery and average maternal age was 28 years.

The frequency distribution of deliveries in 2005 according to maternal age group is given in the following table.

Deliveries according to maternal age groups:

<i>Age group (years)</i>	<i>2005</i>		<i>2004</i>	
	<i>Frequency</i>	<i>%</i>	<i>Frequency</i>	<i>%</i>
<15	4	<1	5	<1
15-19	224	6	217	6
20-24	654	17	721	19
25-29	1410	37	1418	37
30-34	1105	29	1028	27
35-39	321	8	359	9
40-44	78	2	85	2
45+	6	<1	4	<1
Unspecified	2	<1	1	<1

Marital Status:

This year, 734 (19%) of all deliveries occurred to mothers who were never married (single); while 3005 (79%) of all deliveries occurred to mothers who were reported as married, and 64 (1.7%) were reported as being widowed, separated or divorced. For the remaining delivery the mother had no marital status specified.

In 2005, according to the data registered in NOIS, 3802 mothers were reported as having 'support at home to raise the infant', one was reported as 'not having support at home to raise the infant, and for another mother this information was not specified.

Nationality:

92.3% (3512) of all deliveries this year, occurred to women of Maltese nationality while 6.2% (237) were Non-Maltese. In the remaining 1.4% (55) nationality was not specified.

Parity:

There were 50.3% of mothers who were primiparas while 49.7% were multiparas in 2005. The following table gives a breakdown of mothers by age and parity.

Parity of mothers by maternal age group:

Mother's Age Group	Delivery order							
	1 st	2 nd	3 rd	4 th	5 th	>5 th	Unknown	Total
Under 20	205	21	2	0	0	0	0	228
20-24	464	150	33	6	1	0	0	654
25-29	795	484	89	28	9	5	0	1410
30-34	373	500	170	41	13	8	0	1105
35-39	61	118	100	26	13	3	0	321
40-44	10	23	29	8	5	3	0	78
45-49	2	0	2	1	1	0	0	6
Unknown	2	0	0	0	0	0	0	2
Total	1912	1296	425	110	42	19	0	3804

MATERNAL LIFESTYLES

There were 203 (5.3%) of mothers who were reported to smoke one or more cigarettes during pregnancy this year. None were reported to drink alcohol on a daily basis and 12 (0.3%) were reported as being drug abusers.

The following table gives the reported smoking, alcohol and drug habits of mothers for 2005 and 2004.

<i>Maternal Lifestyles</i>	<i>2005</i>	<i>2004</i>
	<i>No.</i>	<i>No.</i>
<i>Cigarette smoking during pregnancy:</i>		
1 to 3/day	36	58
>than 3/day	167	218
Do not smoke	3574	3552
Unspecified	27	10
<i>Alcohol consumption during pregnancy:</i>		
Up to 1 unit/day	0	0
>than 1 unit/day	0	0
None	3777	3830
Unspecified	27	8
<i>Drug Abuse during pregnancy</i>		
Yes	12	12
No	3765	3818
Unspecified	27	8

PATHOLOGY DURING PREGNANCY

The table below gives the number of mothers for this year and last year that were reported with a specific obstetric pathology during pregnancy.

The most frequently reported pathology during pregnancy was gestational hypertension, there were in fact 7% of mothers who were registered as having gestational hypertension this year.

<i>Pathology recorded during pregnancy</i>	<i>2005</i>			<i>2004</i>		
	<i>Yes</i>	<i>No</i>	<i>Unspec.</i>	<i>Yes</i>	<i>No</i>	<i>Unspec.</i>
Antepartum Haemorrhage	34	3768	2	39	3796	3
Gestational hypertension	261	3540	3	237	3598	3
Pre-eclampsia	15	3788	1	14	3823	1
Eclampsia	0	3802	2	5	3832	1
Placenta praevia	19	3784	1	11	3827	0
Abruption of placenta	5	3798	1	11	3827	0
Suspected IUGR*	206	3596	2	186	3650	2
Assisted fertilisation	38	3765	1	44	3793	1
Cardiovascular disease	3	3797	4	1	3829	8

*IUGR – intrauterine growth retardation

DIABETES IN PREGNANCY

In 2005 there were 12 mothers who were reported as being Insulin Dependent Diabetic before this pregnancy while there was 1 mother reported with Non-Insulin Dependent diabetes prior to pregnancy. In addition, there were a total of 102 mothers registered with gestational diabetes who were controlled without the use of insulin, and 2 mothers registered as having gestational diabetes treated with insulin.

CATEGORY OF MATERNITY ACCORDING TO DELIVERY

For this year, there were a total of 3746 (98%) singleton and 55 (1.4%) twin deliveries, 3 triplet and no quadruplet deliveries.

<i>Category</i>	<i>2005</i>	<i>2004</i>
Singleton	3746	3782
Twin	55	50
Triplet	3	4
Quadruplet	0	2

SITE AND ONSET OF DELIVERY

In 2005 of the total 3804 deliveries registered by NOIS, 3793 (99.7%) occurred in a hospital while there were 9 deliveries that occurred at home but were later referred to a hospital and another 2 that occurred at another site. 2 of the hospital deliveries were reported as underwater.

In 2005, of the total 3804 deliveries, 48.3% (1837) were reported as spontaneous onset of contractions, 36% (1374) were induced by drugs or artificial rupture of membranes and 15.6% (593) were planned caesarian sections.

INFANT/FETAL BIRTHS

METHOD OF BIRTH

In 2005 there were a total of 3865 infant/fetal births. Of these 2480 (64.2%) were delivered as a vertex delivery, 1222 (31.6%) by emergency or elective Caesarean Section and 163 (4.2%) by assisted vaginal delivery (includes forceps, ventouse and breech).

<i>Method of Birth*</i>	<i>2005</i>	<i>2004</i>
Infants/fetuses delivered by:		
Vertex delivery	2480	2647
Elective/emergency Caesarean Section	1222	1105
Forceps	5	9
Ventouse	153	141
Breech deliveries	5	0

**Data analysed according to total infant/ fetal births*

For 2005 there were 1222 infants/fetuses delivered by caesarian section but 1165 caesarian operations performed, this due to the fact that a number of caesarians are done in multiple birth deliveries. The Caesarean section operation rate in 2005 was 30.6% of the total 3804 maternal deliveries.

GENDER DISTRIBUTION OF BIRTHS

The gender distribution of births is given in the table below. As usually seen, there were more male infants/fetuses delivered than female.

<i>Gender</i>	<i>2005</i>		<i>2004</i>	
	<i>No.</i>	<i>%</i>	<i>No.</i>	<i>%</i>
Male	2000	52	2019	52
Female	1865	48	1883	48

BIRTHWEIGHT OF INFANTS/FETUSES

In 2005, there were 3604 (93%) of the total births that occurred in the birth weight range of 2500g to 4999g. 230 (6%) of the total births were in the low birth weight range of 1500g to 2499g, while 26 (1%) of births were of very low birth weight 500g to 1499g. This year there were 19 babies of birth weight 4500g and over. In 4 babies, the birth weight was not recorded. The lowest birthweight recorded this year was 500g and occurred in one of a twin delivery, the highest birth weight recorded was 5700g and this baby was born to a 32 year old mother having gestational diabetes during pregnancy. The average birth weight was 3219g in 2005 and 3213g in 2004.

Birthweights	2005		2004	
	Number	%	Number	%
<500g	0	0	0	0
500-999g	14	0.4	10	0.3
1000-1499g	12	0.3	28	0.7
1500-1999g	39	1.0	61	1.6
2000-2499g	191	4.9	210	5.4
2500-2999g	836	21.6	869	22.3
3000-3499g	1685	43.6	1566	40.1
3500-3999g	908	23.5	932	23.9
4000-4499g	157	4.1	205	5.3
4500-4999g	18	0.5	17	0.4
5000+	1	<0.1	1	<0.1
Unspecified	4	0.1	3	0.1

OUTCOME OF BIRTH

The number of live births in 2005 was 3857 which accounted for 99.8% of the total births at a national level. The remaining 8 births were stillbirths. Of the livebirths, there were 13 cases of early neonatal deaths and 4 cases of late neonatal deaths (see tables below).

<i>Outcome of Birth</i>	2005	2004
Livebirths	3857	3887
Stillbirths	8	15

<i>Neonatal deaths</i>	2005	2004
Early Neonatal deaths	13	12
Late Neonatal deaths	4	5

INFANT FEEDING METHODS AT DISCHARGE

Infant feeding habits are recorded by hospital staff at the time of discharge, little can be said on the actual infant feeding habits as these may change soon after discharge from the birthing facilities.

<i>Infant feeding methods at time of discharge</i>	2005	2004
Breast only	2332	2130
Bottle only	1098	1218
Mixed (Breast & Bottle)	397	501
Other*	31	32
Unspecified	9	21

* 'Other' - include babies who are still at hospital after 28 days and those who die before discharge

MATERNAL, FETAL, PERINATAL AND NEONATAL MORTALITY STATISTICS
(Compiled in conjunction with the National Mortality Register of the Department of Health Information)

Maternal, fetal, perinatal and neonatal mortality statistics are good indicators of the quality of health care and these statistics are presented since 1999 when the NOIS database was started in the format it is today.

Definitions of the various rates presented are given below and follow the definitions suggested by WHO ICD-10 (International Statistical Classification of Diseases and Related Health Problems – Tenth Revision).

There were no maternal deaths during 2005.

Maternal deaths since 1999

Year	Maternal Deaths
1999	1
2000	0
2001	2
2002	0
2003	0
2004	0
2005	0

Fetal death rates since 1999

Year	Fetal death rate 500g and over		Fetal death rate – 1000g and over	
	Number	Rate/1000 total births	Number	Rate/1000 total births
1999	27	6.2	18	4.2
2000	16	3.6	12	2.8
2001	20	5.1	17	4.3
2002	20	5.1	13	3.3
2003	16	3.9	8	2.0
2004	15	3.8	15	3.8
2005	8	2.1	7	1.8

Early Neonatal mortality rates since 1999

Year	Early neonatal mortality rate 500g and over		Early neonatal mortality rate – 1000g and over	
	Number	Rate/1000 live births	Number	Rate/1000 live births
1999	16	3.7	9	2.1
2000	16	3.6	7	1.6
2001	10	2.5	3	0.8
2002	16	4.1	13	3.3
2003	18	4.5	11	2.7
2004	12	3.1	8	2.1
2005	13	3.4	5	1.3

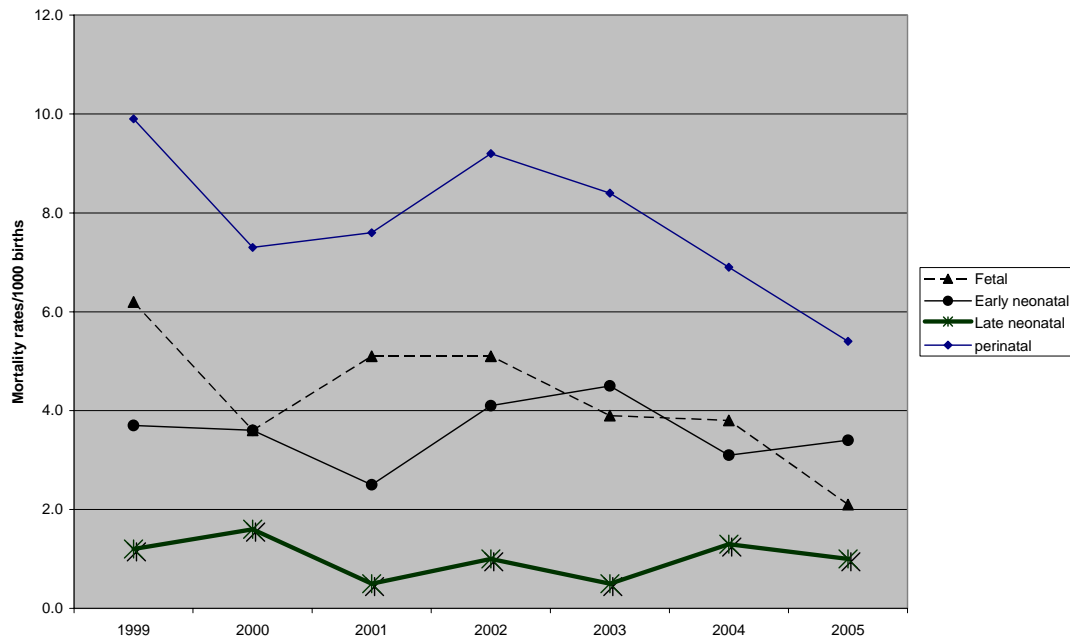
Perinatal mortality rates since 1999

Year	Perinatal mortality rate 500g and over		Perinatal mortality rate – 1000g and over	
	Number	Rate/1000 total births	Number	Rate/1000 total births
1999	43	9.9	27	6.2
2000	32	7.3	19	4.4
2001	30	7.6	20	5.1
2002	36	9.2	26	6.6
2003	34	8.4	19	4.7
2004	27	6.9	23	5.9
2005	21	5.4	12	3.1

Late Neonatal mortality rates since 1999

Year	Late neonatal mortality rate 500g and over		Late neonatal mortality rate – 1000g and over	
	Number	Rate/1000 live births	Number	Rate/1000 live births
1999	5	1.2	3	0.7
2000	7	1.6	4	0.9
2001	2	0.5	1	0.3
2002	4	1.0	3	0.8
2003	2	0.5	2	0.5
2004	5	1.3	5	1.3
2005	4	1.0	3	0.8

Fetal, Perinatal and Neonatal mortality rates 1999-2005 (for infants/fetuses of birth weight 500g and over)



It is seen that fetal and perinatal mortality show a decreasing trend since 1999.

DEFINITIONS:

Birth Weight

The first weight of the fetus or newborn obtained after birth.

Low birth weight is less than 2500g (up to and including 2499g).

Very low birth weight is less than 1500g (up to and including 1499g).

Extremely low birth weight is less than 1000g (up to and including 999g)

Gestational Age

The duration of gestation is measured from the first day of the last menstrual period. Gestational age is expressed in complete days or completed weeks.

For the purposes of calculation of gestational age from the date of the first day of the last normal menstrual period to the date of delivery, it should be borne in mind that the first day is day zero and not day one; days 0-6 therefore correspond to completed week zero;

Fetal Death

Fetal death is the death prior to the complete expulsion or extraction from its mother of a product of conception, irrespective of the duration of the pregnancy; the death is indicated by the fact that after such separation, the fetus does not breathe or show any other evidence of life, such as beating of the heart, pulsation of the umbilical cord, or definite movement of voluntary muscles.

Fetal Death Rate

The number of fetal deaths in a year expressed as a proportion of the total number of births (live births plus fetal deaths) in the same year. All fetuses with a birth weight of 500g and over are considered. Rates are usually expressed per 1000 total births.

$$\text{Fetal death rate} = \frac{\text{no. of fetal deaths in a year weighing 500g or more}}{\text{Number of live births plus fetal deaths in that year weighing 500g or more}} * 1000$$

$$\text{Fetal death rate (weight specific)} = \frac{\text{no. of fetal deaths in a year weighing 1000g or more}}{\text{Number of live births plus fetal deaths in that year weighing 1000g or more}} * 1000$$

Live Birth

Live birth is the complete expulsion or extraction from its mother of a product of conception, irrespective of the duration of pregnancy, which, after separation, breathes or shows any evidence of life, such as beating of the heart, pulsation of the umbilical cord, or definite movement of the voluntary muscles, whether or not the umbilical cord has been cut or the placenta is attached; each product of such a birth is considered live born.

Neonatal Period

The neonatal period commences at birth and ends 28 completed days after birth. Neonatal deaths (deaths among live births during the first 28 completed days of life) may be subdivided into early neonatal deaths, occurring during the first seven days of life, and late neonatal deaths, occurring after the seventh day but before 28 completed days of life.

Age at death during the first day of life (day 0) should be recorded in units of completed minutes or hours of life. For the second (day 1), third (day 2) and through 27 completed days of life, age at death should be recorded in days.

Neonatal Mortality Rate

The number of deaths during the neonatal period in that year expressed as a proportion of the total number of live births in the same year. Rates are expressed per 1000 live births.

$$\text{Neonatal mortality rate} = \frac{\text{no. of neonatal deaths in a year} * 1000}{\text{no. of live births in that year}}$$

$$\text{Neonatal mortality rate (weight specific)} = \frac{\text{no. of neonatal deaths in a year (1000g or over)} * 1000}{\text{no. of live births in that year (1000g or over)}}$$

Early Neonatal Mortality Rate

The number of deaths during the early neonatal period (during first 7 days of life) in that year expressed as a proportion of the total number of live births in the same year. Rates are expressed per 1000 live births.

$$\text{Early Neonatal mortality rate} = \frac{\text{no. of early neonatal deaths in a year} * 1000}{\text{no. of live births in that year}}$$

$$\text{Early Neonatal mortality rate (weight specific)} = \frac{\text{no. of early neonatal deaths in a year (1000g or over)} * 1000}{\text{no. of live births in that year (1000g or over)}}$$

Late Neonatal Mortality Rate

The number of deaths during the late neonatal period (occurring after the seventh day but before 28 completed days of life) in that year expressed as a proportion of the total number of live births in the same year. Rates are expressed per 1000 live births.

$$\text{Late Neonatal mortality rate} = \frac{\text{no. of early neonatal deaths in a year} * 1000}{\text{no. of live births in that year}}$$

$$\text{Late Neonatal mortality rate (weight specific)} = \frac{\text{no. of early neonatal deaths in a year (1000g or over)} * 1000}{\text{no. of live births in that year (1000g or over)}}$$

Perinatal Period

The perinatal period commences at 22 completed weeks (154 days) of gestation (the time when birth weight is normally 500g) and ends at seven completed days after birth.

Perinatal Mortality Rate

The number of deaths during the perinatal period in a year expressed as a proportion of the total number of births (live births plus fetal deaths) in the same year.

$$\text{Perinatal mortality rate} = \frac{\text{no. of perinatal deaths in a year} * 1000}{\text{no. of live births plus fetal deaths in that year}}$$

$$\text{Perinatal mortality rate (weight specific)} = \frac{\text{no. of perinatal deaths in a year (weight 1000g or over)} * 1000}{\text{no. of live births plus fetal deaths in that year (weight 1000g or over)}}$$

ACKNOWLEDGEMENTS

Acknowledgements go to all contributing hospitals and their respective staff:

St. Luke's / Karin Grech Hospital, Pieta

Gozo General Hospital, Victoria

St. James Hospital, Sliema

St. James Hospital, Zabbar

St. Philip's Hospital, Sta Venera.

The Registry Staff would also like to acknowledge the contribution of:

- Dr. Renzo Pace Ascjak, Consultant, Health Information
- Dr. Ray Busuttil, Director General, Health
- Profs. Mark Brincat, Chairman, Department of Obstetrics and Gynaecology and his team of obstetricians
- Mr. Ray Galea, Consultant, Obstetrics and Gynaecology
- Dr. Simon Attard Montalto, Chairman Paediatrics and his team of paediatricians
- The Director, St. James Hospital, Zabbar and the hospital team of obstetricians and midwives
- The Director, St. James Hospital, Sliema and the hospital team of obstetricians and midwives
- The Director, St. Philip's Hospital and the hospital team of obstetricians and midwives
- Mr. Michael Axiaq, Staff Nurse at Gozo General Hospital
- Ms. Natalie Zammit, Manager Midwifery Services, Karin Grech Hospital (KGH)
- Ms. Marcelle Cipriott, Midwifery Officer, Labour Ward, KGH and her team of midwives.
- Ms. Valentina Caruana, NOIS Survey nurse, Post Natal Ward, KGH
- Dr. Kathleen England, National Mortality Registry, Dept. of Health Information (DHI)
- Dr. Neville Calleja, Medical Statistician, DHI
- Mr. Brian Cassar, Communications Officer, Health
- Ms. Catherine Vella, Demography Section, National Statistics Office

and all staff of the Department of Health Information.